



KINGSTON

Manufacturing reliable industrial valves for industry since 1908.

KCV 234 & 237

In-Tank Check Valves

KCV 234



KCV 237



For Non-Return Air Applications

Kingston's KCV 234 & KCV 237 In-Tank Check Valves offers an improved one piece body with high flow rates and top quality at an economical price. The Model KCV 234 is a heavy duty valve with a male to female fitting. Kingston's Model KCV 237 offers the same design as the KCV 234, but with male to compression fitting.

Features

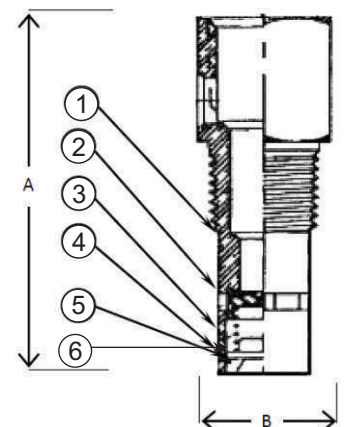
- For Non-Return Air Applications
- Maximum Temperature is -250° F to 400° F
- Maximum Operating Pressure is 400 PSIG
- Precision Machined with Teflon Seat
- High Flow Rates
- One Piece Construction
- Standard 1/8" NPT Sideport
- Plug Option Available, Add "P" to Part Number

Applications

- Air Compressors

Parts & Materials

No.	Part Name	Materials
1	Body	Brass ASTM-B16
2	Disc	Teflon- 25% Glass Filled
3	Spring Seat	Stainless Steel
4	Retaining Clip	Zinc Coated Carbon Steel
5	Spring Guide	Brass ASTM-B16
6	Spring	Stainless Steel



Kingston Model KCV 234 & 237 Check Valves

Specifications

Model	Inlet Size	Outlet Size	Cracking Pressure (PSI)	Dimensions (inches)		Approx. Ship Wt.
				Height (A)	Hex (B)	
234-3-4	3/8" NPT	1/2" NPT	4	2-3/8"	7/8"	3.0 oz.
234-4-4	1/2" NPT	1/2" NPT	4	2-13/16"	1"	4.0 oz.
234-4-5	1/2" NPT	3/4" NPT	4	3-1/4"	1-1/8"	7.4 oz.
234-5-5	3/4" NPT	3/4" NPT	4	3-29/32"	1-3/16"	7.0 oz.
234-5-6	3/4" NPT	1" NPT	0.5	3-29/32"	1-5/16"	11.2 oz.
234-6-6	1" NPT	1" NPT	0.5	3-29/32"	1-1/2"	1 lb. 3.2 oz.
234-7-7	1-1/4" NPT	1-1/4" NPT	0.5	3-29/32"	1-7/8"	1 lb. 2.4 oz.
237-3-4	3/8" NPT	1/2" NPT	4.0	2-3/8"	7/8"	3.6 oz.
237-4-4	1/2" NPT	1/2" NPT	4.0	2-13/16"	1"	4.2 oz.
237-5-5	3/4" NPT	3/4" NPT	2.0	3-1/4"	1-3/16"	7.4 oz.
237-5-6	3/4" NPT	1" NPT	0.5	3-29/32"	1-5/16"	12 oz.

Product Notes

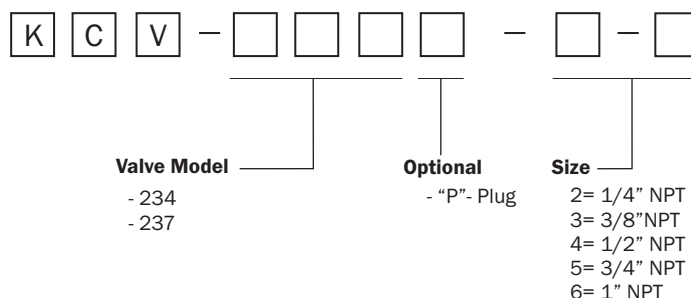
All Kingston Check Valves are manufactured under a quality control system approved by the National Board of Boiler and Pressure Vessel inspectors.

Storm Manufacturing Group, Inc. reserves all rights. Product specifications and designs are subject to change without notice.

The information contained herein by Storm Manufacturing Group (SMG) is provided in good faith and as a product guide only. Further, SMG makes no representation as to the completeness or accuracy of the information contained herein. Any person or persons using the information contained herein must exercise their own judgement and consider all local, regional, national and global safety standards in evaluating valve selection options. Final application design and integration of Kingston Products are the sole responsibility of the end user.

Ordering Information

Kingston In-Tank Check Valves Part Number Codes



www.KingstonValves.com
KINGSTON