



# KINGSTON

Manufacturing reliable industrial valves for industry since 1908.

## 216

Check Valve

## Model 216

Kingston Horizontal Check Valve



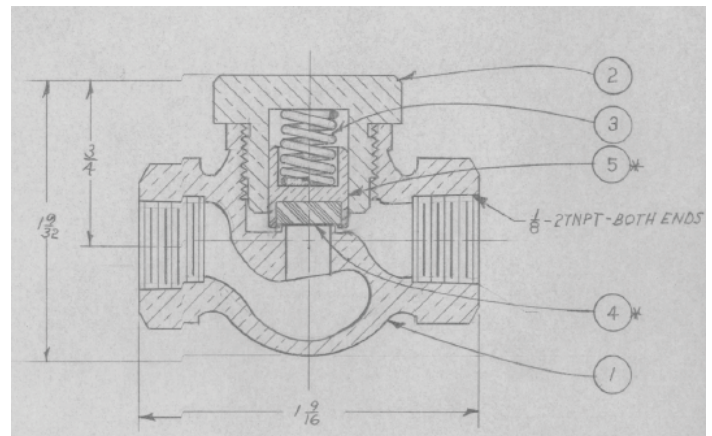
### Features

- Cast Red Brass Body
- Designed for Lubricated or Non-Lubricated Air Compressors
- Designed Specifically for Use in Horizontal Pipe Lines
- Heavy Duty Construction for Lasting Performance
- Precision Machined with Soft Seat
- Maximum Operating Pressure is 250 PSIG
- Maximum Temperature is 200 °F

Model	Inlet Size	Outlet Size	Dimensions			Set Pressure Range (PSIG)	Approx. Shipping Wt.	Max. Temp (°F)
			(Height)	(Width)	(Hex)			
216	1/4" NPT	1/4" NPT	1-9/16"	1-31/32"	3/4"	1-250	7 oz.	200°F
	3/8" NPT	3/8" NPT		2-1/2"	1-1/16"			

### Materials

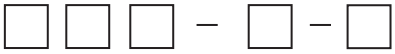
No.	Part Name	Materials
1	Body	Brass
2	Cap	Brass
3	Spring	Stainless Steel Wire
4	Disc	Neoprene
5	Plunger	Brass
7	Plunger Assy	DTLS. 4 & 5



# Kingston Model 216 Horizontal Check Valve

## Ordering Information

### Kingston Horizontal Check Valves Part Number Codes



**Valve Model**

- 216

**Size**

2= 1/4" NPT  
3= 3/8"NPT

## Product Notes

Storm Manufacturing Group, Inc. reserves all rights. Product specifications and designs are subject to change without notice.

The information contained herein by Storm Manufacturing Group (SMG) is provided in good faith and as a product guide only. Further, SMG makes no representation as to the completeness or accuracy of the information contained herein. Any person or persons using the information contained herein must exercise their own judgement and consider all local, regional, national and global safety standards in evaluating valve selection options. Final application design and integration of Kingston Products are the sole responsibility of the end user.



[www.KingstonValves.com](http://www.KingstonValves.com)  
**KINGSTON**