



KINGSTON

Manufacturing reliable industrial valves for industry since 1908.

200

Check Valve

Model 200

Kingston Horizontal Anti-Hammering Check Valve



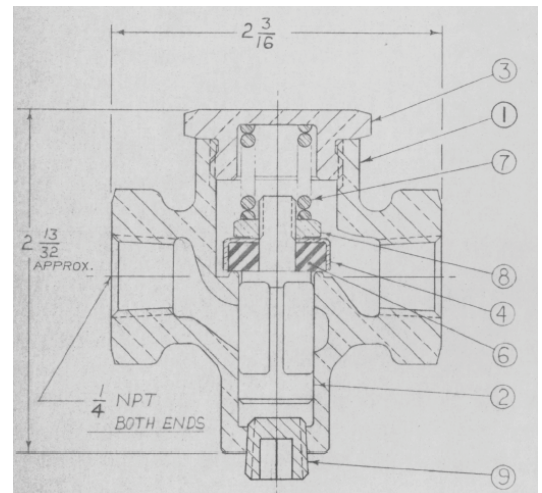
Features

- Cast Red Brass Body
- Dash-Pot Piston Design Reduces Compressor Hammering
- Design Allows for Easy Removal of Scale and Rust Debris
- Designed Specifically for Use in Horizontal Pipe Lines
- Heavy Duty Construction for Lasting Performance
- Lubricated Compressed Air Applications
- Precision Machined with Soft Seat
- Water, Oil, and Inert Gas Applications

Model	Inlet Size	Outlet Size	Dimensions		Approx. Shipping Wt.	Min. Temp (°F)	Max. Temp (°F)	Set Pressure Range (PSIG)
			(Height)	(Width)				
200	1/4" NPT	1/4" NPT	2-13/32"	2-3/16"	10 oz.	-40°F	225°F	0-400
	3/8" NPT	3/8" NPT		2-3/8"	12 oz.			
	1/2" NPT	1/2" NPT	2-7/8"	2-23/32"	1 lb. 3 oz.			

Materials

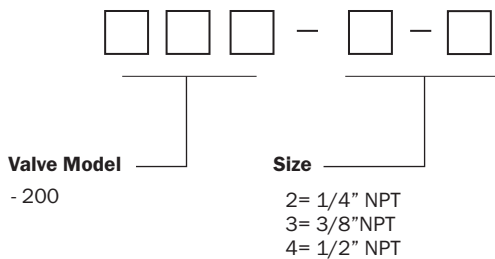
No.	Part Name	Materials
1	Body	Brass
2	Plunger	Brass
3	Cap (Screen Cage)	Brass
4	Cage (Disc)	Brass
6	Disc	Buna "N"
7	Spring	Stainless Steel
8	Plunger Nut	Brass
9	Plug	Steel



Kingston Model 200 Horizontal Anti-Hammering Check Valve

Ordering Information

Kingston Check Valves Part Number Codes



Product Notes

Storm Manufacturing Group, Inc. reserves all rights. Product specifications and designs are subject to change without notice.

The information contained herein by Storm Manufacturing Group (SMG) is provided in good faith and as a product guide only. Further, SMG makes no representation as to the completeness or accuracy of the information contained herein. Any person or persons using the information contained herein must exercise their own judgement and consider all local, regional, national and global safety standards in evaluating valve selection options. Final application design and integration of Kingston Products are the sole responsibility of the end user.



www.KingstonValves.com
KINGSTON

Copyright 2016 © Storm Manufacturing Group. All rights reserved. Product designs and specifications subject to change without notice. 02.200.16.r1