



KINGSTON

Manufacturing reliable industrial valves for industry since 1908.

120

Safety Relief Valve

Model 120

Kingston Side Outlet Relief Valve



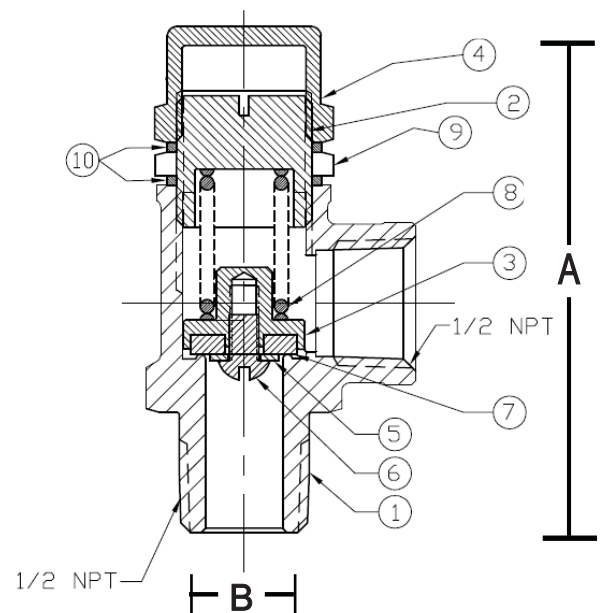
Features

- Cast Red Brass Body
- Liquid and Non-Code Air Applications
- NPT Side Outlet for Venting Control
- Precision Machined with Soft Seat
- Set Pressure Range 0-300 PSI
- Tested in National Board Approved Quality Assurance Process.

Model	Inlet Size	Orifice	Thickness	Dimensions (Inches)		Set Pressure Range (PSI)	Approx. Ship Wt.	Min. Temp (°F)	Max. Temp (°F)
				Height (A)	Hex (B)				
120	1/2" NPT	0.500	1-1/8"	3-1/16"	1-1/16"	0-300	9 oz.	-41°F	250°F

Materials

No.	Part Name	Materials
1	Body	Brass CSTG
2	Adj. Screw	Brass
3	Disc Cage	Brass
4	Cap Plug	Brass
5	Disc Washer	Brass
6	Screw	Brass
7	Disc	Buna 'N'
8	Spring	Stainless Steel
9	Lock Nut	Brass
10	Washer	Red Fiber



Kingston Model 120 Safety Valve

Flow Capacity Information

Fig. 120 - 1/2"

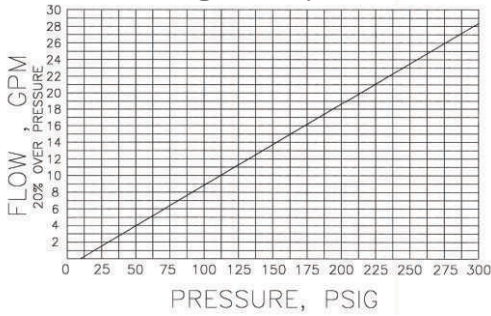
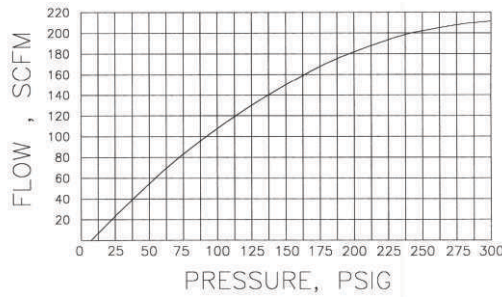
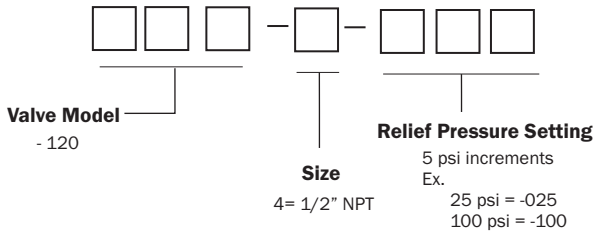


Fig. 120A - 1/2"



Ordering Information

Kingston Safety Relief Valve Part Number Codes



Product Notes

Set pressure can deviate from the marked by ± 2 psig at or below 70 psig set pressure and $\pm 3\%$ psig above 70 psig. Factory standard seat tightness for hard seat valves: no audible leakage at 10% below nameplate set. It is normal for spring-operated safety valves to exhibit leakage or simmer/warn, as the system operating pressure approaches the set pressure. For hard seat valve this typically occurs at pressures at or above 90% of nameplate set pressure.

At very low set pressures (20 psi and below), the ratio of the downward spring force as compared to the upward pressure force is very small. In these cases it may be impossible to achieve seat tightness.

Soft seat valves will typically provide a higher degree of seat tightness than metal, hard seats. Factory standard seat tightness does not ensure bubble-tight seal regardless of material. Storm Manufacturing reserves all rights. Product specifications and designs are subject to change without notice.

The information contained herein by Storm Manufacturing Group (SMG) is provided in good faith and as a product guide only. Further, SMG makes no representation as to the completeness or accuracy of the information contained herein. Any person or persons using the information contained herein must exercise their own judgement and consider all local, regional, national and global safety standards in evaluating valve selection options. Final application design and integration of Kingston Products are the sole responsibility of the end user.



www.KingstonValves.com
KINGSTON