



KINGSTON

Manufacturing reliable industrial valves for industry since 1908.

112CSSP

Safety Relief Valve

Model 112CSSP

ASME Code Safety Valve- Brass, Stainless Steel Ball



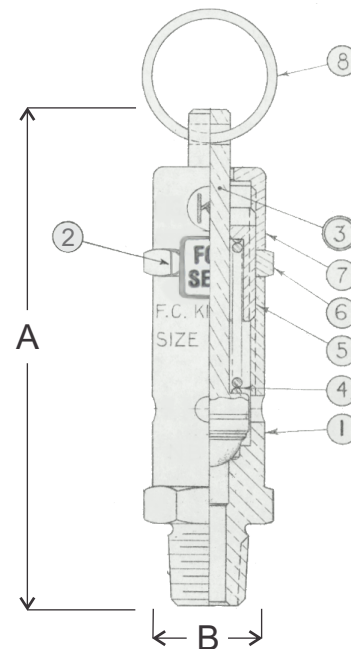
Features

- Precision Machined Hard Seat
- Stainless Steel Ball & Spring
- Pull Ring for Manual Testing
- Available Sizes: 1/4" NPT & 3/8" NPT
- ASME Certified- Stamped UV + NB
- Section VIII Steam Pressures of 36-54 PSIG
- Registered in All Canadian Provinces & Territories
- Maximum Temperature is 400° F

Model	Inlet Size	Orifice	Dimensions (inches)		Set Pressure Range (PSIG)	Approx. Shipping Wt.	Max Temp. (° F)
			Height (A)	Hex (B)			
112CSSP	1/4" NPT	.250	3-1/8"	3/4"	36-54	4 oz.	400° F
	3/8" NPT	.250	3-1/8"	3/4"		4 oz.	

Materials

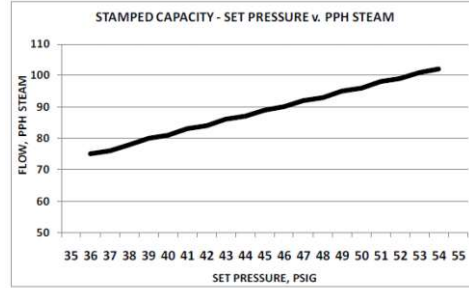
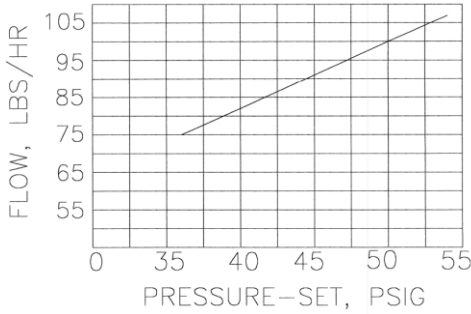
No.	Part Name	Materials
1	Body	Brass
2	Seal	Vinyl
3	Stem Assembly	Brass Stem, Stainless Steel Ball
4	Spring	Stainless Steel
5	Adjusting Screw	Brass
6	Lock Nut	Brass
7	Cap	Brass
8	Pull Ring	Stainless Steel



Kingston Model 112CSSP Safety Relief Valve

Flow Capacity Information

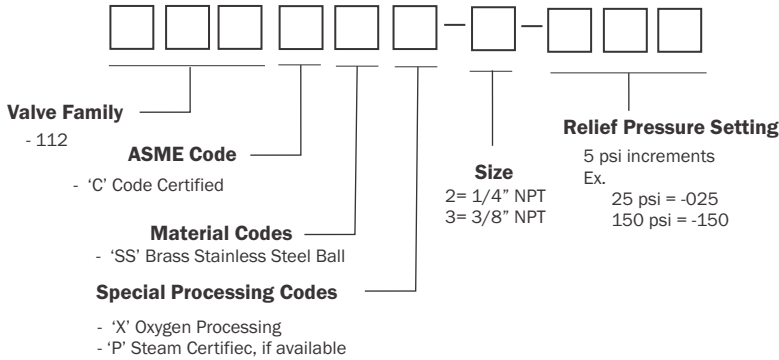
Fig. 112CSSP - 1/4"



SET PRESSURE PSI	STAMPED CAPACITY PPH STEAM
36	75
37	76
38	78
39	80
40	81
41	83
42	84
43	86
44	87
45	89
46	90
47	92
48	93
49	95
50	96
51	98
52	99
53	101

Ordering Information

Kingston Side Outlet Relief Valve Part Number Codes



Product Notes

All Kingston Safety Valves are manufactured under a quality control system accepted by the National Board of Boiler and Pressure Vessel inspectors. Code valves are capacity certified by the National Board, manufactured in accordance with ASME Code, set and sealed at the factory.

Set pressure can deviate from the marked by ± 2 psig at or below 70 psig set pressures and $\pm 3\%$ psig above 70 psig.

Factory standard seat tightness for hard seat valves: no audible leakage at 20% below nameplate set. It is normal for spring-operated safety valves to exhibit leakage or simmer/warn, as the system operating pressure approaches the set pressure. For hard seat valves this is typically occurs at pressure at or above 80% of nameplate set pressure.

At very low set pressure (20 psig and below), the ratio of the downward spring force as compared to the upward pressure force is very small. In these cases it may be impossible to achieve seat tightness.

Soft seat valves will typically provide a higher degree of seat tightness than metal, hard seats. Factory standard seat tightness does not ensure bubble-tight seal regardless of material. Storm Manufacturing reserves all rights. Product specifications are subject to change without notice.

The information contained herein by Storm Manufacturing Group (SMG) is provided in good faith and as a product guide only. Further, SMG makes no representation as to the completeness or accuracy of the information contained herein. Any person or persons using the information contained herein must exercise their own judgement and consider all local, regional, national and global safety standards in evaluating valve selection options. Final application design and integration of Kingston Products are the sole responsibility of the end user.



www.KingstonValves.com
KINGSTON